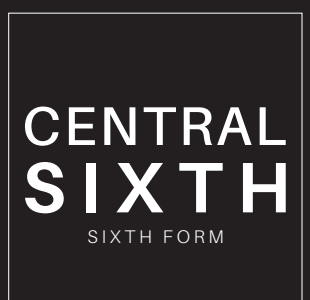
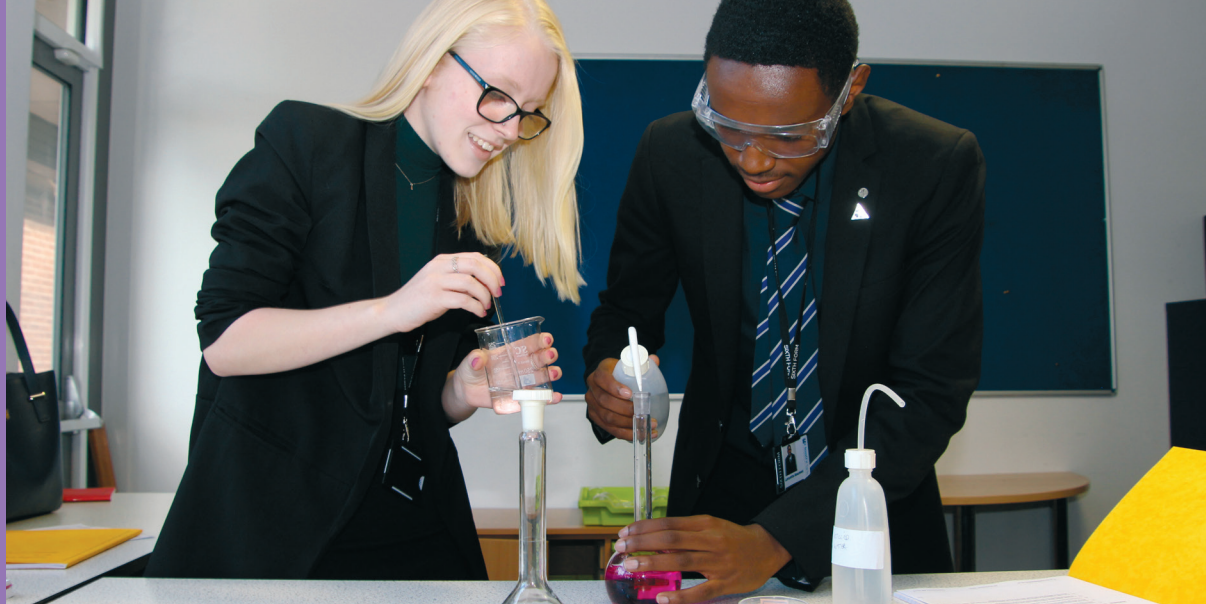


CENTRAL SIXTH  
**PROSPECTUS**





# WELCOME

**We are delighted that you are considering CENTRAL SIXTH as a place to spend the next phase of your education. We are confident that you will have a challenging and very positive experience and enjoy excellent outcomes.**

## CENTRAL SIXTH is the joint Sixth Form operating between Heath Park, Moseley Park and Coppice.

This successful collaborative partnership enables us to offer students a broader range of subject choice and access to the most experienced teachers delivering Level 3 subjects. We have a very experienced and well qualified team who work closely together to ensure that students are well supported throughout their time in the Sixth Form. The three Heads of Sixth Form and their teams have many years experience in guiding students through the rigours of A Level and Level 3 Vocational study and also of the university and apprenticeship application process. We work closely together to ensure all students within Central Sixth access the support and excellent teaching available to them across each site. Organisation of the student day facilitates travel between the three sites by school minibus.

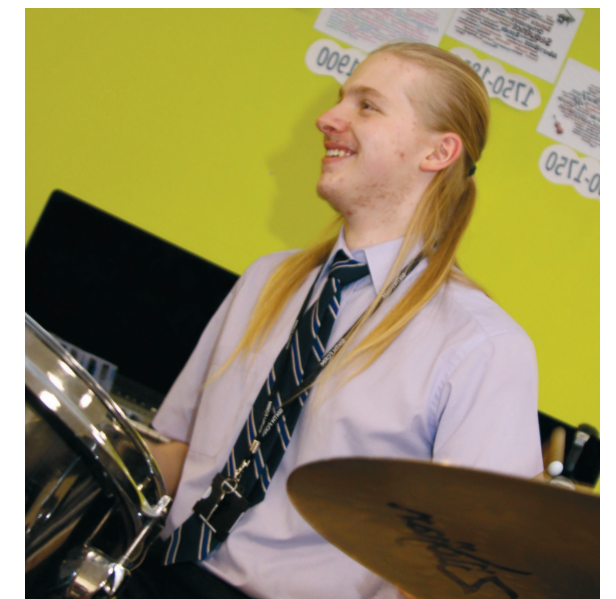
We have an open door policy and pride ourselves on always making time for students.

In addition to the Heads of Sixth Form each school has a team of Sixth Form tutors who play a crucial role in mentoring and guiding students throughout their time with us. We also have a Learning Support Assistant dedicated to Post 16 students and a Counsellor who is available at student's request.

Our Sixth Form administrator plays a vital role in monitoring attendance, organising letters/reports and being a point of contact for students and parents alike.

Each Level 3 subject has a Learning Leader directly responsible for managing the subject and we have a highly qualified and experienced team of subject teachers who deliver the curriculum to a high standard.

Mrs Georgetta Holloway OBE, Executive Headteacher



# PATHWAYS

At **CENTRAL SIXTH** we are able to offer the best combination of courses and pathway to suit each individual student.

All students follow a two year course on one of the following pathways:

## PATHWAY 1

4 A Level courses

## PATHWAY 2

A combination of A Levels and Vocational BTECs

## PATHWAY 3

4 BTEC courses

Following application students are invited to a Post 16 interview that parents are welcome to attend. Discussions regarding course choices will take the following information into account;

- Predicted grades for current Key Stage 4 courses
- Entry requirements for chosen Key Stage 5 courses
- Projected outcome grades for Key Stage 5 courses
- Style of learning and assessment preferences
- Future destination and career

Post 16 courses are challenging, this interview aims to ensure all students receive the appropriate advice and guidance to guarantee they are on the most appropriate pathway for success at Central Sixth.

## UCAS Tariff Points Table

UCAS POINTS	A LEVEL	BTEC
56	A*	D*
48	A	D
40	B	
32	C	M
28		
24	D	
16	E	P

# BTECs & A LEVELS

Both Vocational and A Level courses are offered at Central Sixth. Which is right for you?

## TEACHING STYLE

Content knowledge and expectations of both A Level and BTEC Level 3 courses are extremely challenging. The methods of teaching will be similar to those experienced in Key Stage 4, however, the assessments to test this knowledge differs between the two types of course.

## ASSESSMENTS

A Level qualifications are assessed mainly through terminal examinations at the end of the two year course. Vocational qualifications are assessed through regular coursework with strict deadline criterion as well as external assessments. One style may well suit an individual more than the other to support successful outcomes at the end of the course.

## EXPERIENCE

Both qualifications equip students with a depth of understanding in the course subject area and are both equally accepted by universities and apprenticeship providers. Some BTEC courses are offered at Diploma level (double) enabling students to specialise in a subject area during their Post 16 studies. Many A Levels and all BTECs offer practical experience that is essential evidence when applying to universities and apprenticeships after sixth form.



# COURSES

Course	Qualification	Award
Art	A Level	A Level
Art	BTEC	Diploma
Art & Design	BTEC	Extended Certificate
Applied Science	BTEC	Extended Certificate
Biology	A Level	A Level
Business	A Level	A Level
Business	BTEC	Extended Certificate
Business	BTEC	Diploma
Chemistry	A Level	A Level
Computer Science	A Level	A Level
Dance	A Level	A Level
Drama	A Level	A Level
English	A Level	A Level
French	A Level	A Level
Geography	A Level	A Level
Graphics	A Level	A Level
Health & Social Care	BTEC	Extended Certificate
Health & Social Care	BTEC	Diploma
History	A Level	A Level
ICT	Cambridge Technical	Introductory Diploma
ICT	BTEC	Extended Certificate
ICT	BTEC	Diploma
Maths	A Level	A Level
Maths (Core)	Level 3	Level 3 Certificate
Maths (Further)	A Level	A Level
Media (Creative)	BTEC	Extended Certificate
Media (Digital)	Cambridge Technical	Diploma
Performing Arts	BTEC	Extended Certificate
Photography	A Level	A Level
Physics	A Level	A Level
Psychology	A Level	A Level
Sociology	A Level	A Level
Sport	BTEC	Extended Certificate
Sport	BTEC	Diploma
Textiles	A Level	A Level
Travel & Tourism	BTEC	Extended Certificate

# SITES

**CENTRAL SIXTH facilities are spread over three sites which you can reach by a free CLPT minibus ride.**

All students are provided with a lanyard, and they will use this to sign in and out at each of the sites. Food at lunchtime is available at each site, and utilises a universal finger print system via Parent Pay. Transport between the three school sites is by minibus and is provided free of charge. The buses leave first thing in the morning, the start of lunchtime, and at the end of the school day. If students miss a bus, they are expected to make their own way to lessons.



# DRESS CODE

We want CENTRAL SIXTH students to create a professional, purposeful and businesslike image so we ask students to wear a uniform which is an important part of our Sixth Form ethos.

## UNIFORM

Sixth Form students must wear a black suit. Sixth Form students are expected to wear their uniform correctly and set a positive example to the rest of the school.

## BOYS

- Plain black suit with a shirt
- Sixth Form tie (blue, purple and silver)
- Lapel badge
- Black shoes

## GIRLS

- Plain black suit - dress, tailored trousers, skirt and jacket
- Blouse or shirt
- Lapel badge
- Black shoes

## ALL STUDENTS

- Earrings - one pair only (small studs). NO hoops or dangling earrings
- Rings - Plain type
- Visible tatoos, nose studs or facial jewellery are NOT allowed in any circumstances.



# HOW TO APPLY

Entrance to the Sixth Form is by written application and interview.

We expect all of our Sixth Form students to display extremely high standards and set a positive example to those in Years 7 to 11.

All students applying for Sixth Form are expected to have displayed excellent punctuality and to have an attendance record of 96% or better in Year 11.

The application forms will be available from the night of our Open Evening.



## ATTENDANCE MORE THAN

# 96%



# GUIDANCE & SUPPORT

We provide high quality support while studying at **CENTRAL SIXTH**.

**OUR SUPPORT INCLUDES:**

- Dedicated, specialist teaching
- Supporting students to meet target grades
- Helping students with study skills and providing excellent facilities
- Providing opportunities for work experience and other enrichment
- Deciding whether to follow a university or apprenticeship progression route from Sixth Form
- Providing information and guidance about apprenticeships and higher education via tutors, teaching staff and collaborating with external agencies and universities
- Supporting students through the UCAS process when applying to university
- Supporting students when applying to apprenticeship providers
- Visits, as appropriate, to universities and other providers.



# DESTINATIONS

**RECENT STUDENT DESTINATIONS**

- Aston University
- Birmingham City University
- BIMM Institute
- University of Birmingham
- Bradford College
- Coventry University
- De Montford University
- University of Derby
- University of Exeter
- University of Gloucestershire
- Keele University
- University of Lincoln
- University of Manchester
- Manchester Metropolitan University
- Northumbria University
- Nottingham Trent University
- Oxford Brookes University
- University of Plymouth
- University of Portsmouth
- Queen Mary University of London
- Queen’s University Belfast
- University of Reading
- University of Salford
- Staffordshire University
- University of Warwick
- University of the West of England
- University of Wolverhampton



---

# CONTACT US

**E:** [enquiries@clpt.co.uk](mailto:enquiries@clpt.co.uk)

**T:** 01902 55 6360

**W:** [www.clpt.co.uk](http://www.clpt.co.uk)



CENTRAL LEARNING  
PARTNERSHIP TRUST

CENTRAL  
**SIXTH**  
SIXTH FORM